



ADVANCED RESOURCES CO. شركة المصادر المتقدمة المحدودة

HOLLOW METAL DOORS

ADVANCED METAL DOORS



PRODUCTS PORTFOLIO



المدينة المنورة: هاتف 0148403727 سجل تجارى 4650058961 بريد إلكتروني: ADV.RES.CO.@hotmail.com
رقم ضريبي / 3010084700003 ص.ب. (3038) الرمز البريدي (42521)
رقم ايبان حساب الراجحي: -- -- SA798000590608010836118 الاهلي SA311000033162485000110



شركة المصادر المتقدمة المحدودة

قسم الابواب
المعدنيه

ADVANCED RESOURCES

تخصصت المجموعة منذ أكثر من عشر سنوات بأعمال الأبواب الحديد
المكبوس وأبواب الطوارئ وذلك طبقاً للمواصفات القياسية ومعايير
الجودة ويمتلك قسم الأبواب الحديدية مصنع تجهيز الأبواب المعدنية
والدهان الالكتروستاتيكية .





ADVANCED RESOURCES CO.

Introduction

Advanced resources co. (steel fabrication dept.) is part of ADV.RES. CO. the group has numerous companies operating within the Kingdom of Saudi Arabia within the following division

The combined assets of the group are in excess of SAR 50 million. Started formed in 1997, (scope est.) with an aim of having a Construction and Maintenance arm to compliment the group's other activities. has successfully completed prestigious projects at jedda-madina

Adv. Res. Co. has been able to assemble a team of highly skilled and motivated professional staff to take care of our customers of our customers who, to date, have been fully satisfied with our performance.

Mission statement

ADV.RES.CO. truly care for each client. We build enduring relationship by understanding and anticipating our client's needs and by serving them better each time. Scope client can count on us to consistently deliver superior product and services to help them achieve their personal and business goal.

We believe innovation is the engine that will keep us vital and growing. Our work culture embraces creativity and seeks different perspective. We care constantly searching for new ways to make technology more useful to our clients.

Work place

We have our head office in Medina Munawara

Business profile

Registered address: P.O.Box 70369, Jeddah 21568

C.R. : 4650030538

Telephone : +966-14- 8403727

Fax : +966-14- 8400208





ADVANCED RESOURCES CO.

ADV.RES. FACTORY

ADV.RES.CO. Mechanical Steel factory: has the professional steel & security door manufacturer, the only factory in Madina. We can produce steel door, security steel entry exterior door, commercial stainless steel door, steel fire door to your requirements. If you want more types of steel door, steel exterior door, steel entry door, steel security door, commercial steel door, stainless steel door, steel fire door, commercial steel entry door, steel security screen door, industrial steel door, bifold building door steel, wooden and steel door, stainless steel door handles, stainless steel access door. Please contact us.

We are one of the prominent manufacturers, importers and suppliers of fire protection products that are highly efficient and durable. Our Products are available in customized solutions at reasonable price. We offer our clients a wide range of fire doors that are widely used in homes, offices, hospitals, departmental stores and malls. Our doors not only provide protection but are good in quality and appearance also.

Affordable performance

- 1.5mm steel thickness offers strength and durability.
- Unique layering painting process provides superior rust protection.
- Wood graining is available in selected styles.
- Steel edge offers a 45-minute-2 hr fire rating, while wood edge provides a 20-minute fire rating for additional safety from the spread of fire.

Energy efficiency

- Polyurethane-core construction offers five times the insulation value compared to wood doors.

Fire and Sound Resistant:

We provide fire resistant and sound deadening doors with insulating foam made of polyurethane resulting from the reaction between a polyol component and an isocyanic component. Polyurethane core fills entire door cavity. Core is chemically bonded to all interior surfaces. High Impact resistance and excellent insulation characteristics.

Styles and sizes for a variety of installations.

ADV.RES. steel entry doors come in a variety of heights, widths and styles, offering complete versatility for any installation.

Delivery, Installation and fitting:

ADV.RES. provides the delivery of doors, frames and other material to the Customers location. We offer Clean framing systems promptly after installation in accordance with quality management system. Improved fire safety



ADVANCED RESOURCES CO.

Machines Details

1	AUTOMATIC CUTTING MACHINE	1
2	AUTOMATIC PRESSING MACHINE	1
3	AUTOMATIC BENDING MACHINE	1
4	SHEARING MACHINE	1
5	AUTOMATIC FOAMING MACHINE	2
6	HEATER ROOM FOR PAINT COATING (6METRE LENGTH)	1
7	PAINT COATING MACHINE	1
8	HEAVY DRILLING MACHINE	1
9	HEAVY DIE PRESSING MACHINE	1
10	ANGLE CUTTING MACHINE	1
11	PORTABLE CUTTING MACHINE	5
12	PORTABLE WELDING MACHINE	5
13	PORTABLE DRILLING MACHINE	6
14	PORTABLE GRINDING MACHINE	4
15	OXY-FUEL CUTTING/WELDING MACHINE	1
	TOTAL MACHINES	32

** Most of the Machines have been ordered from Outside Saudi Arabia.*





ADVANCED RESOURCES CO.



Scope Automatic
Binging Machine



S
c
o
m
p
a
n
y
F
h
o
i
a
n
m
e
i
n
g



SCOPE PRESSING
MACHINE



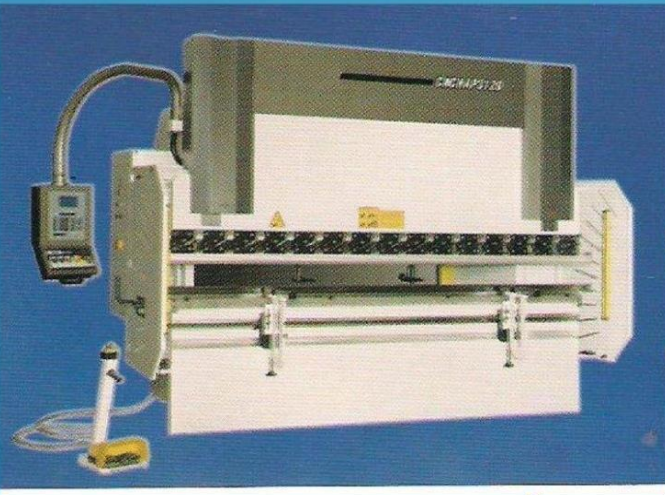
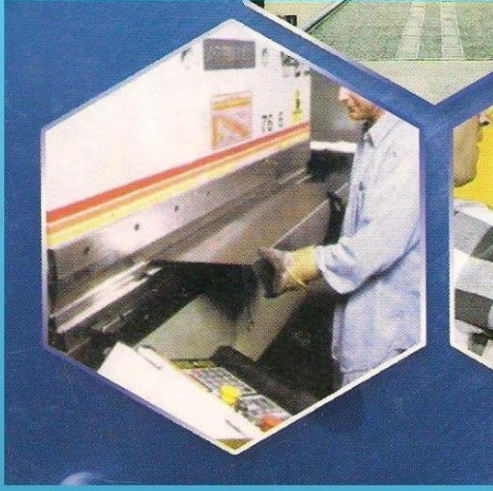
Scope Automatic
Cutting
Machine

ERMAK

Secure-Fit® Steel Door Frame System

- **Durability, security and easy installation.**
 - Built for use in residential renovation and remodeling applications.
 - To be installed into existing door frames.
 - Can be used in both interior and exterior applications.
 - Exclusive long-lasting paint finish protects against rust.
 - Offers optimum security and six times the energy efficiency of wood doors when used with steel doors.
 - Reversible 4" x 4" hinges and lip strike with variable deadbolt prep are standard.
 - Greater security and less maintenance than wood frames.
 - Can be installed by one person in 20 minutes and after walls are in place.







وايماننا منا بضروره التطوير المستمر وحرصا منا علي تقديم جوده عاليه للابواب المعدنيه تتماشى مع متطلبات الدفاع المدني والهيئات الحكوميه قام المصنع بالتعاون المثمر لتوزيع الابواب التي تتطلب شهادات امنيّه موثقه مثل شهادات INTERTEK & UL مع استخدام كافه الاكسسورات المعتمده ذات الجوده العاليه والمعتمده بشهادات عالميه لتلبيه جميع متطلبات سوق العمل ليبقي شعارنا دائما





شركة الديار لصناعة الاخشال المعدنية للمباني ذ.م.م.
AL DEYAR METAL BLDG. CONST. IND. LLC.

AUTHORIZED DISTRIBUTOR LETTER

Effective: December 26, 2022

To whom it may concern:

This letter is to CERTIFY, that **M/s. Advance Resources Co.**, located at Madina Saudia Arabi, Industrial Area 42521 Al Nomean Bin Amro, is an AUTHORISED DISTRIBUTOR at Al Madina Al Munawra, Kingdon of Saudi Arabia.

M/s. **Advance Resources Co.**, has the responsibility to promote, distribute, sale and offer installation for **AL DEYAR METAL BLDG. CONST. IND. LLC following products:**
(MADE IN UAE)

<i>Fire Rated and Non-Fire Rated Steel Doors</i>
<i>Fire Rated Steel and Aluminium Doors, Windows and Partitions</i>
<i>Bullet Proof - Doors & Glass</i>

We also authorize M/s. **Advance Resources Co.**, to participate on our behalf in government and private projects for our products and services.

M/s. **Advance Resources Co.**, Staff and Personnel is fully trained and qualified to provide aftersales support for Sohar Steel Products and services.

This certificate commences on the date of signing and is valid for the period of one year.

Yours faithfully,

Authorized Signatory.

AL DEYAR METAL BLDG. CONST. IND. LLC



Sharjah, UAE | Tel: +971 6 538 5572 | Fax: +971 6 538 4045 |





Abu Dhabi Civil Defence

Abu Dhabi Civil Defence Installation

Sharjah Civil Defence

Dubai Civil Defence

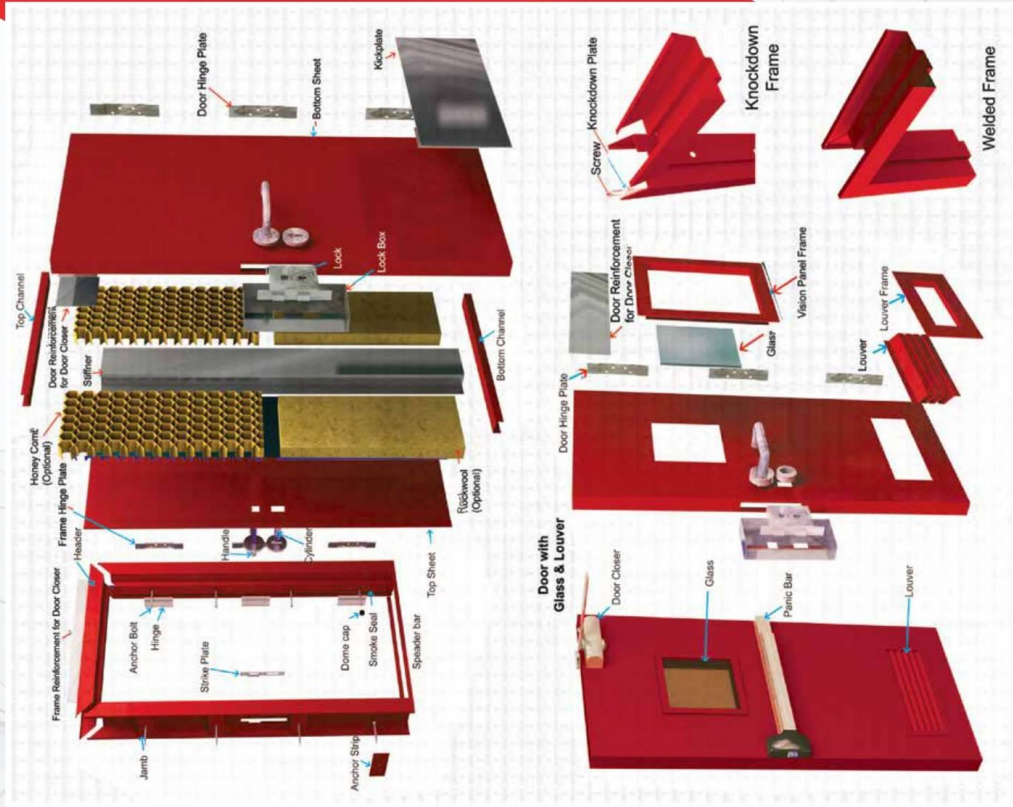
Umm Al Quwain Civil Defence

Ajman Civil Defence





Steel Door Construction Overview



Steel Door Construction Overview



Description

Steel Doors are fabricated fully Flush seamless, with seam Glazed Panel, Stiffeners and laminated core models suitable for any commercial residential buildings, industrial, hospitals, hotels, schools, available with wide range of glass lights and with louver preparation ETC.

Different types of cores: with single and double leaf configuration.

Customized Design as per Customer requirements.

Specifications

Construction	Mechanically interlocked, hemmed vertical edge seam with inverted top and bottom channel welded to both face sheets.
Materials	Cold rolled galvanized steel sheet confirm to ASTM or equivalent standard
Gauge/Door Thickness	45-80mm thick door with skin thickness 0.9 to 2mm
Core Or Insulation	Honeycomb / Rockwool
Application	Light to extra heavy duty use as per SDI
Frame Gauge/Jamb Depth	1.5 to 4mm/ up to 500mm
Ironmongery	Certified as per door test standard BS, EN and UL
Fire Rating	Up to 240 minutes as per EN/BS and 120 minutes as per UL
Test Standard	EN 1634-1/BS 476 part 20-22/UL10C
Certification	Intertek, BM trada, Exova Warrington
Finish	Powder coated/ Wood finish/ Wet paint meets ANSI A 250.3 and ANSI A 250.10

Additional Features

- Seamless welded design
- Vision panel
- Bottom Louver/ Grille
- Alternate Stainless-steel material
- Additional top panel
- Knock down frame /Groove frame with kerf gasket
- Smoke rated as per UL1784 / BS476 section 311/BSEN 1634-3
- STC/Acoustic and Fire rating together up to 47 db



Door Infill Details, Vision Panel & Fire Rated Louver Details



Rock Wool / Mineral Core

Rock Wool / Mineral Core made from molten basalt rocks spun to fine fibers & bonded with thermosetting phenol resin used for thermal insulation, acoustical & fire barrier.

Provide with suitable vertical stiffeners. Commonly used for our fire rated doors.



Honeycomb Core

Honeycomb Core is made from layers of paper or cardboard together by parallel & uniformly spaced lines of adhesive, light weight & high strength.

Glued to the interior surface of the door skin door leaf is the pressed for a couple of hours to maintain the flatness of the door.

Compressive strength is equal to 1.4 kg/cm². Commonly used for fire rated doors.

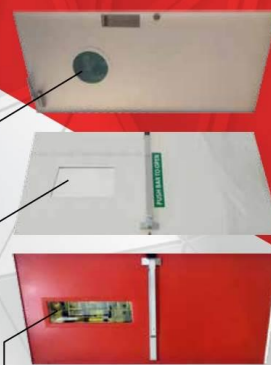
Louvers - Fire Rated

Labeled doors can be provided with optional louvers with fusible link / intumescent for a maximum size of 600 x 600 mm upto 90 minutes. Fire rated doors.

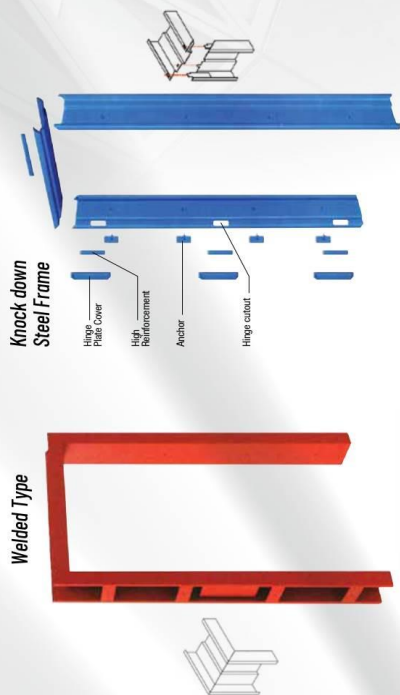


Vision Panel

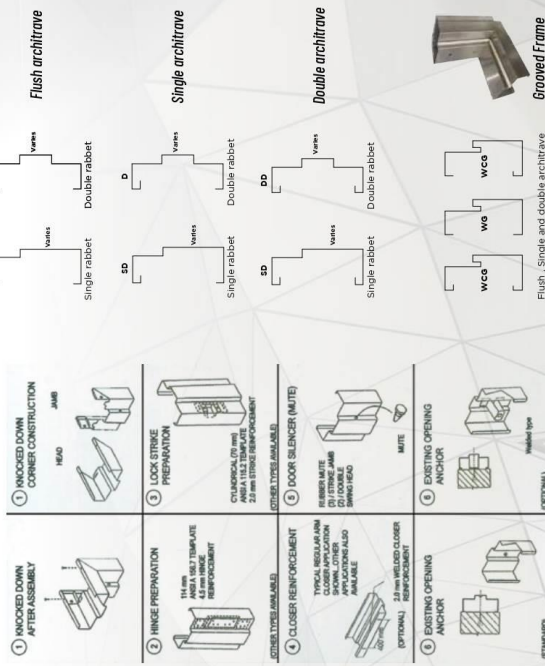
Door leaf can be provided with Vision Panel for visibility.



Steel Frame Construction



MW Series Frames Construction Features



بعض المشاريع المنفذه

بعض من سابقه الاعمال الخاصه بالابواب المعدنيه لشركه المصادر المتقدمه (قسم الابواب)

المجمعات الحكومية والمشاريع

مشروع جامعه الريان	المدينه المنوره
مشروع اسكان جده	جده
مبنى اماره المدينه	المدينه المنوره
مبنى الادلاء لوزارة الحج	المدينه المنوره
مبنى دار القضاء	المدينه المنوره

المجمعات الفندقية

فندق زها المدينه	المنطقه المركزيه المدينه
فندق ملينيوم المطار	مطار المدينه
فندق حفاوه	امام الراشد مول - المدينه المنوره
فندق النمطية	شارع الملك عبد العزيز
فندق نواة المدينه	العزيزية

قطاعات المستشفيات

مستشفى الحياه	المدينه المنوره
مستشفى ينبع العام	ينبع
مستشفى الصعيدي بينبع	ينبع
مستشفى المواساة	المدينه المنوره

المجمعات الاداريه

مبنى العطير الاداري	الطريق الدائري
بوليفارد السلام	المدينه المنوره
أسواق المحمدية	الطريق الدائري
السيف جاليري للادوات المنزلية	شارع المطار



بعض المشاريع المنفذه

بعض من سابقه الاعمال الخاصه بالابواب المعدنيه لشركه المصادر المتقدمه (قسم الابواب)

قطاعات المدارس

المدينه المنوره	مجمع مدارس الحياه
المدينه المنوره	مجمع مدارس العقيق
المدينه المنوره	مجمع مدارس الأوس
المدينه المنوره	مجمع مدارس الخندق

المصانع

طريق المدينة حائل الجديد	مركز صيانة المتحده للسيارات
المنطقة الصناعيه حمراء الأسد	مصنع القحطاني للتمور
المنطقة الصناعيه حمراء الأسد	مصنع أبو عوف للصاج

المستوصفات

المدينه المنوره	مستوصف نجد الخزامي (تابعه للشئون الصحيه)
منطقة العقيلة	مستوصف العقيلة
منطقة الجديدة	مستوصف الجديدة
المدينه المنوره	مستوصف العقيق

شركات ومؤسسات الامن والسلامه

المدينه المنوره	مؤسسه دخيل الله دخيل عوده السفيناني
المدينه المنوره	مؤسسه الهدف الامني للامن والسلامه
المدينه المنوره	مؤسسه الصاعق للامن والسلامه
المدينه المنوره	مؤسسه مسارات الاطفاء للسلامه
المدينه المنوره	شركة العطيشان للامن والسلامه
المدينه المنوره	مؤسسه كيان للامن والسلامه
المدينه المنوره	مؤسسه جوهرة السلامه

بالاضافه الي العديد من الاعمال الاخري مثل المساجد والمجمعات السكنيه الخاصه والعديد من الاعمال الخاصه بالشركات والمجمعات التجاريه الاخري والاعمال الخدميه المتخصصه





بعض اعتمادات الهيئات الحكومية

Form with multiple sections for project details, including 'معلومات المشروع', 'معلومات العميل', and 'معلومات المورد'. Includes a table for 'رقم الصنف' and 'اسم الصنف ووصفه'.

MATERIAL SUBMITTAL FORM (MSF) form with fields for 'Product Description', 'Supplier', 'Manufacturer', and 'Usage / Usage Location'. Includes a table for 'Approved by', 'Reviewed by', and 'Prepared by'.

Request for Inspection form with sections for 'CONTRACTOR', 'EMPLOYER', 'ENGINEER', and 'REQUEST FOR INSPECTION'. Includes a table for 'Inspection Time' and 'Description of Works'.

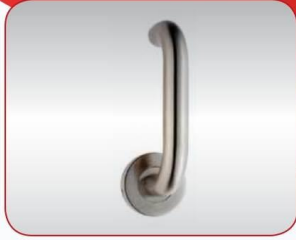
Request for Sample Approval form with sections for 'Request for Sample Approval', 'Contractor's Comments', and 'Engineer's Comments'. Includes a table for 'Request for Sample Approval'.





Architectural Hardware
Fire Rated Hardware- Listed And Certified

Architectural Hardware
Fire Rated Hardware- Listed And Certified



SAFETY LEVER



FLUSH BOLTS



BALL BEARING HINGES



EXTERNAL LEVER TRIM



SASH LOCK



DOOR STOPPER



PUSH PLATE SIGN



DOOR CO-ORDINATOR



DUST SOCKET



VERTICLE PUSH BAR



CONCEAL DOOR CLOSERS



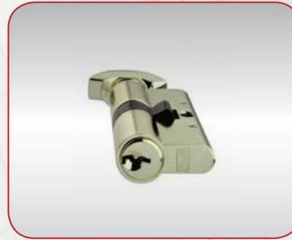
DOUBLE CYLINDER



TOUCH BAR PANIC BOLT



DOOR CLOSER



CYLINDER & TURN



TOUCH BAR PANIC LATCH



PUSHPAD LATCH



ALLEN KEY LOCK

